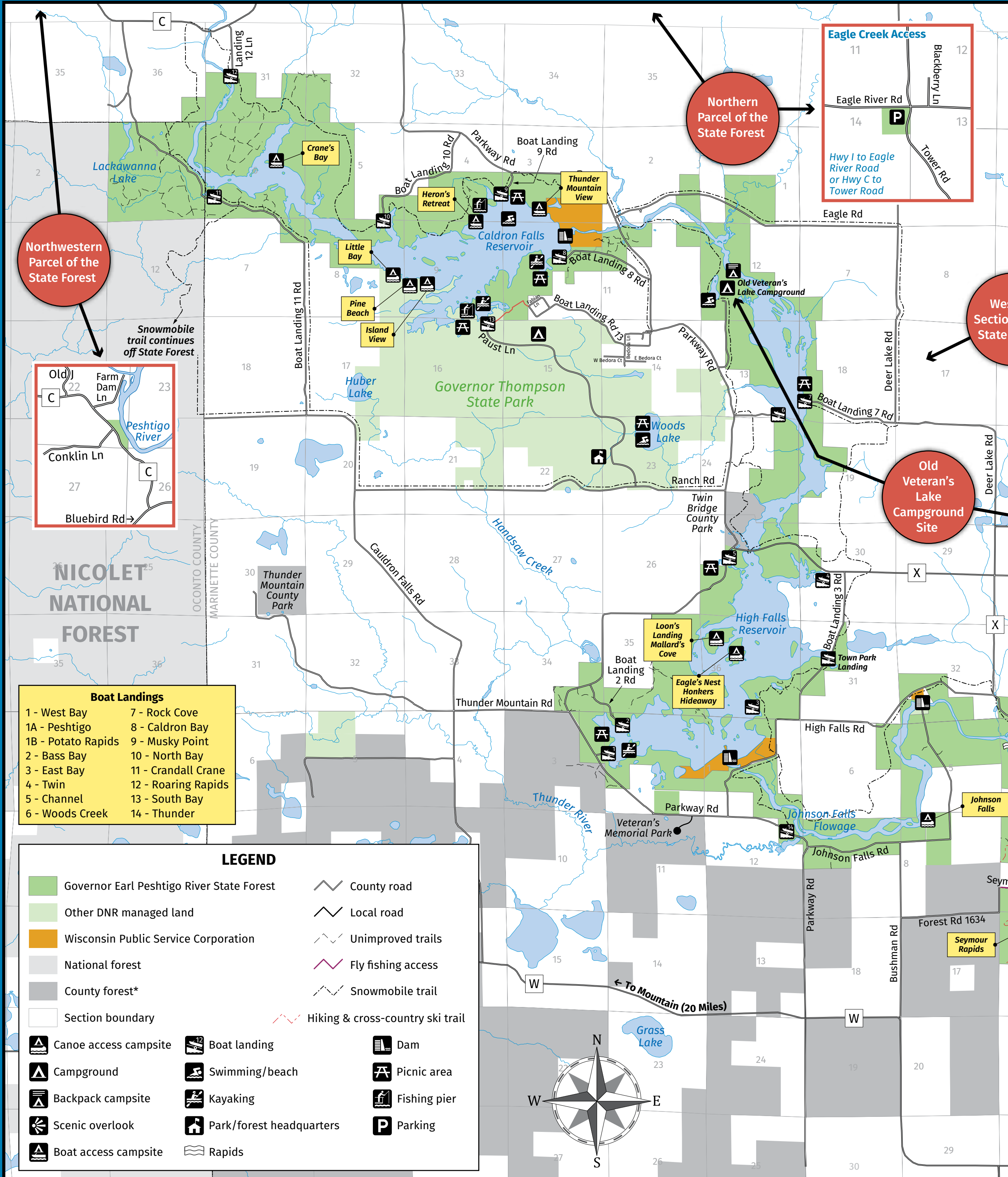
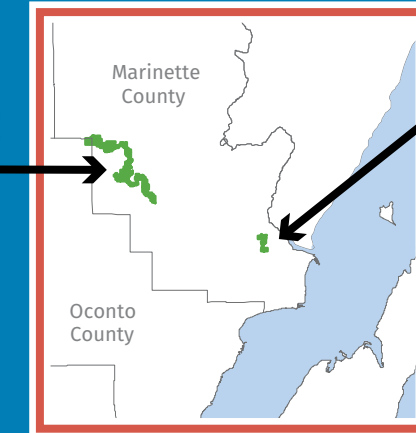
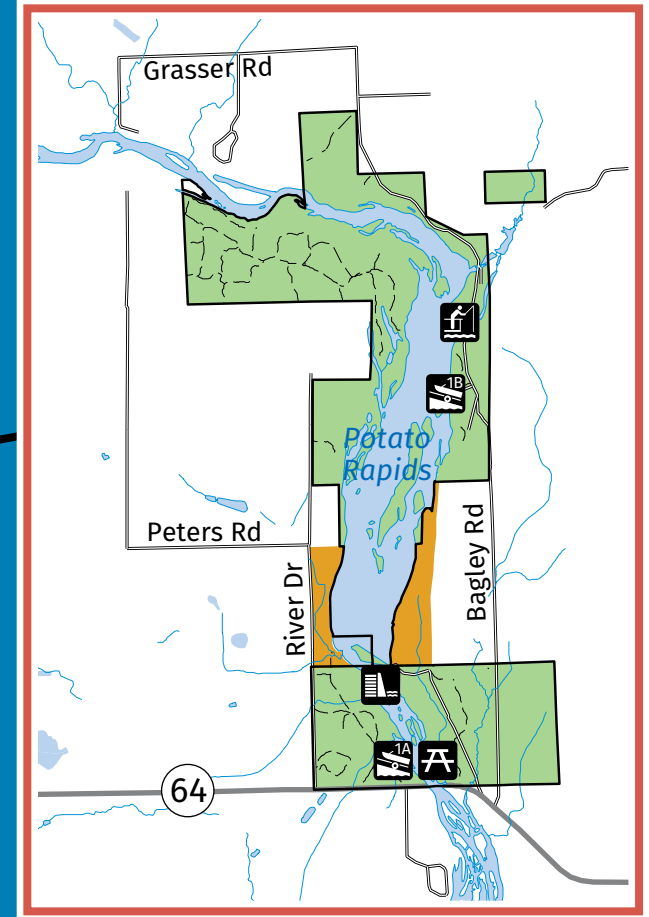


GOVERNOR EARL PESHTIGO RIVER STATE FOREST



Governor Earl Peshtigo River State Forest
 N10008 Paust Lane, Crivitz WI 54114
 (715) 757-3965 • dnr.wi.gov

Field office hours vary. Please call ahead.

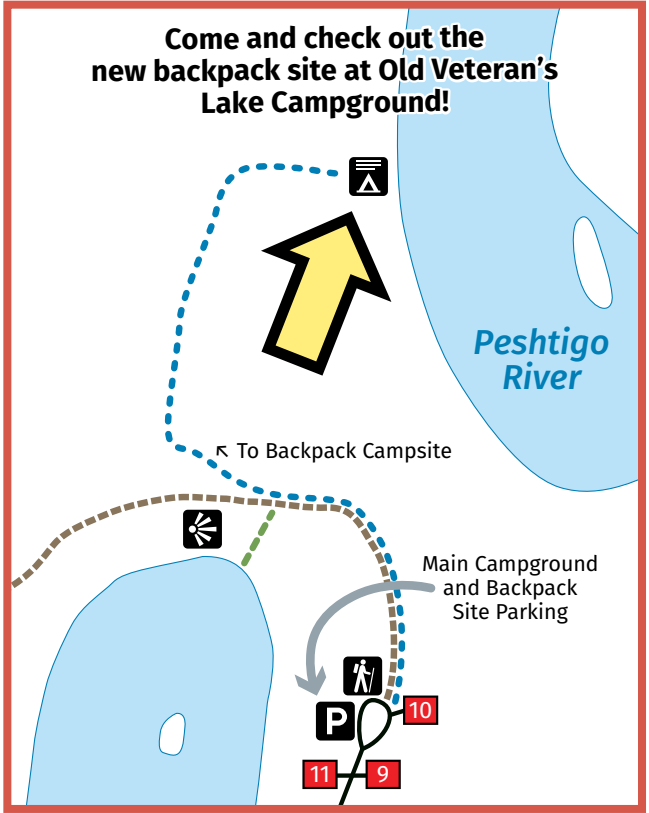
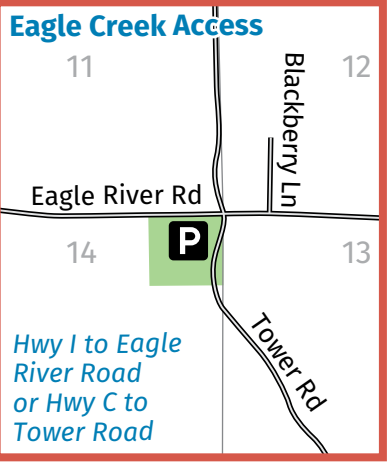


Northwestern Parcel of the State Forest

Northern Parcel of the State Forest

Western Section of the State Forest

Old Veteran's Lake Campground Site



Boat Landings

1 - West Bay	7 - Rock Cove
1A - Peshtigo	8 - Caldron Bay
1B - Potato Rapids	9 - Musky Point
2 - Bass Bay	10 - North Bay
3 - East Bay	11 - Crandall Crane
4 - Twin	12 - Roaring Rapids
5 - Channel	13 - South Bay
6 - Woods Creek	14 - Thunder

LEGEND

Governor Earl Peshtigo River State Forest	County road
Other DNR managed land	Local road
Wisconsin Public Service Corporation	Unimproved trails
National forest	Fly fishing access
County forest*	Snowmobile trail
Section boundary	Hiking & cross-country ski trail
Canoe access campsite	Boat landing
Campground	Swimming/beach
Backpack campsite	Picnic area
Scenic overlook	Fishing pier
Boat access campsite	Park/forest headquarters
	Parking
	Rapids

The data shown on this map has been obtained from various sources, and are of varying age, reliability and resolution. This map is not an authoritative source of information about legal land ownership or public access.

Due to scale and processing limitations, some County Forest parcels depicted on the map are shown as full 40-acre units. In reality, actual County Forest acreage amounts may be much smaller than 40 acres.



← To Mountain (20 Miles)

To Hwy 141 →

To Athelstone and Cty Rd C →

To Crivitz →

To Crivitz →

Snowmobile trail continues off State Forest